



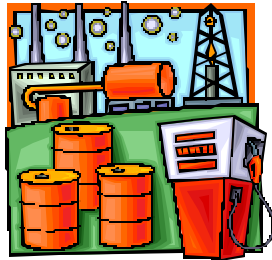
# Shawnee Trails

News of the Shawnee Group — August 2003

## In This Month's Issue:

- [Art, Craft and Yard Sale](#) [1](#)
- [Too Warm to Drill](#) [1](#)
- [Outings Calendar: Adventure Guide](#) [2](#)
- [Big River Educational Workshops](#) [3](#)
- [Volunteers, Web Resources & The Monthly Quote](#) [Back](#)

## Too Warm to Drill



Shawnee Group members couldn't help but notice the ironic twist of fate facing those intent on drilling the Arctic National Wildlife Refuge for oil. It seems that global warming caused mostly by large-scale burning of oil and other fossil fuels is interfering with efforts in Alaska to discover yet more oil.

A state of Alaska rule says heavy exploration equipment can be used on fragile tundra only when the ground is frozen to 12 inches deep and covered by at least six inches of snow. However, because winters in the Arctic are becoming shorter, the number of days the tundra meets those conditions has shrunk from more than 200 in 1970 to only 103 last year, a state document notes. "It is unlikely that the oil industry can implement successful exploration and development plans with a winter work season consistently less than 120 days," says the Alaska project description.

One of the arguments by those who favor oil exploration in the Arctic National Wildlife Refuge is that work there would be conducted only during winter months so that the tundra would be protected.

Rafe Pomerance, president of Americans for Equitable Climate Solutions, a group that explores scientific and political issues related to climate change, said an Energy Department grant being used to study how to explore for oil under warming climate conditions "validates the fact that Alaska is warming rapidly and that significant damage is occurring."

See: [http://www.alaskawild.org/AlaskaWild\\_Update.html#GLOBAL%20WARMING](http://www.alaskawild.org/AlaskaWild_Update.html#GLOBAL%20WARMING)

For more information about Clean, renewable energy from the sun and wind offer non-polluting, economical, and sustainable alternatives for generating energy, see <http://www.sierraclub.org/energy/> #

## Event Calendar

**August 2** ~ Membership Beach Party at Spring Arbor Lake.

**August 17** ~ Canoe the Big Muddy River

**August 21** ~ Noon deadline for September Newsletter content.

**August 26** ~ Newsletter Folding @ Don's, 5:30 PM

## FALL YARD SALE

By Anne Hill



Time to clean out the garage for the 2003 Chamber of Commerce Art, Craft and Yard Sale at the Carbondale SIU Arena on Sept. 20th. Anne Hill is once again having open house on Friday night September 12 and all day Saturday, the 13 to collect your precious discards. Please tag your salable items with a price. (One of the reasons we have succeeded in selling out at the Yard Sale is the incredible bargains we offer by selling cheap. Don't be insulted; it's gotta go!)

On Friday, September 19th volunteers will also gather at Anne's to put the final price tags on items in preparation for hauling all the goodies to the SIU Arena lot early the next morning. If you can volunteer at any of these times, please give Anne a call and offer your help.

Where to bring your stuff: Hunt Road is a half a mile east of Giant City blacktop where Walnut St. (Old 13) east of Carbondale curves to cross Crab Orchard Creek. When you get to the curve at the last house, you'll see a Hunt Road sign with an up arrow. Go straight ahead (not around the curve) down the slope on the tar and chip road, around the bend and up the hill to the yellow house on the left at the top. (You can see the house as you come along.) Phone: (618) 457-7206. #

*The public is welcome to attend the membership meeting and all other Sierra Club meetings and outings.*

*Explore, enjoy and protect the planet.*

## SHAWNEE GROUP OUTINGS



**August 17 ~ Lower Big Muddy Canoe Trip.** Our Sunday trip will meet at 8:00 AM west of Murphysboro 5.2 miles on Town Creek Road at the first road after the bridge that crosses the Big Muddy River. We will shuttle cars the 7.6 miles to the take-out point. We will paddle/float from the start point 8.8 miles to the Turkey Bayou-Oakwood Bottoms Recreation Area that is part of the Green Tree Reservoir in the Shawnee National Forest. "This 3,400-acre track is one of the last bottomland hardwood forests, land that was once part of the largest expanse of forest and wetlands on the continent. The Pin Oak tree was one vital remaining link to these original lower alluvial Mississippi

Valley lands. Through collaborative efforts, native trees were replanted. Difficulty level: Easy, but heat and humidity may be a challenge. Beginners are welcome. Contact: Bob Pauls at

<mailto:sg618@yahoo.com>, 549-9408 For trip details see:

<http://Illinois.sierraclub.org/shawnee/outings/Lower Big Muddy 2003.pdf>

**Coming Soon ~** Shawnee Group sponsored day hikes will resume again this Fall. We again will alternate each month with Sunday afternoon hikes and Monday hikes. Tentative plans include Tyson Canyon area, Jackson Hollow, and Pickle Creek/Hickory Canyon (postponed from February)



**September 27 ~ Illinois Caverns State Natural Area.** Persons interested in a cool and easy caving trip to the Illinois Caverns State Natural Area near Baldwin, IL should also contact Bob Pauls. Illinois Caverns State Natural Area is a 120-acre preserve owned by the Illinois Department of Natural Resources. The main attraction of the site is an unimproved wild cave with nearly three miles of walking-height passage. Located in karst-rich Monroe County, the area contains fields, woodlands, native grasses and a half-mile long prairie trail. Illinois Caverns has several beautiful formation areas to see and plenty of opportunities for crawling and up-close investigation. The cave is home to gammarus ach-erondytes, the Illinois Cave Amphipod, listed as a federal endangered species. A variety of other animals may be seen, including bats, salamanders, blind cave fish, cave crickets and other insects.

SEE: <http://dnr.state.il.us/lands/landmgt/PARKS/R4/caverns/CAVE.HTM>

## Adventures with Uncle Bob

See <http://illinois.sierraclub.org/shawnee/unclebob/>

### *Your Monthly Guide to Self-Adventure with Bob Tyson*

This month we travel to a new place: TYSON CANYON. Last winter I was exploring the east end of FOUNTAIN BLUFF and ran across a pretty hidden canyon. At the end of the canyon, several windfalls obstructed the view of the rock shelter/waterfall. I also noted a significant low cave across the creek. Ranger Peterin came out with me later to verify that this canyon was within their property since much of the Fountain Bluff area is privately owned. His staff was unaware of this canyon. We took out a windfall along the lane and then, while attacking the windfalls over the shelter bluff, we had a mishap and fell thru the ice into the creek.

In early June, we were able to complete the task and the forest service gave me trail establishment materials to develop the area. I put in signage to the canyon from the lane to the cave and built a rudimentary bridge over the creek to the cave,. I also cleared weeds over the trail and put up signage to the rockhouse/falls at the end of the canyon. Lastly, I also cut down the slope paralleling the creekbed to form a level path to facilitate walking.

Both sides of this ravine are especially pretty in the spring when wildflowers climb the slopes. In June I noted huge ferns and canebrake, which may be attributed to sunlight not penetrating to the valley floor. There is also a path veering from the trail which ascends in switchbacks to the top for a different view, The path ends at some point, but one can bushwhack if the urge to explore continues.

Directions: Take state highway 149 from Murphysboro to highway 3. Go south to Gorham. Turn right and go 0.5 miles and park on the right. Follow a farm lane that separates a wheat field and the bluff line. Walking in approximately one-fourth of a mile, look to a sign on the left. The end of the canyon is approximately one-third of a mile. Please advise me of any damage or obstructions so that everyone can enjoy this new hiking opportunity. For more information, contact Bob Tyson at 684-5643. 📍



## BIG RIVER EDUCATIONAL WORKSHOPS CONDUCTED ON THE MISSISSIPPI RIVER ABOARD A FLOATING CLASSROOM!

For six years Chad Pregracke's team from Living Lands and Waters has worked in cooperation with local citizens and volunteers to clean up the trash from America's Big River Systems. Tremendous progress has been made, with more than 800 tons of trash successfully removed from the Mississippi, the Ohio and the Missouri River's. These community-based cleanup efforts also have served to educate and connect people to the national treasure these rivers represent.

This year Living Lands and Waters is expanding its river education efforts. A series of one-day workshops on the Mississippi River have been developed in cooperation with the Missouri Department of Natural Resources. The workshops will be offered at various locations on the river throughout the river basin.

The primary target audience is teachers, however, the general public is welcome, as well as any civic leaders and Sierra Club members wishing to learn more about the "Mighty Mississippi." The workshops offer an ideal opportunity to increase public awareness regarding the importance of big river systems and to help participants become more familiar with the educational services offered by their respective states. The general focus for the workshops will be the following:

1. Watersheds: How they function; The Mississippi drainage basin, along with a simple watershed model.
2. The river as a natural resource: Drinking water and the river; Its use as receiving waters for municipal and industrial wastewater; Agricultural activities in the flood plain; Recreational and commercial fishing along the river, and additional recreational aspects of the river.
3. Impacts to the river: Non-point source pollution (issues and prevention), along with other issues that affect the river such as solid waste, flood control, etc.
4. River Stewardship: How to minimize impacts to the river and how to get your school or community involved (adopt a river mile, future cleanups, stream teams and other educational resources).
5. Boat trips: To observe first hand some unique aspects of the river (clam diving, reforestation efforts, riparian zones, lock and dams, etc.).

The workshop will be held directly on the river, giving the participants the opportunity to observe the dynamic and varied Mississippi River first hand. The workshop will start aboard a floating classroom and culminate in the use of smaller boats to visit various river sites. Participants can expect to expand their knowledge of Big Rivers and their watersheds, as well as receive educational materials on Big Rivers to take back to their classrooms, civic groups or youth organizations.

**WHEN:** The workshop will be offered on Sunday, September 28th and again on Monday, September 29th

**WHERE:** Participants will meet on a floating classroom docked on the riverfront right in front of the famous St. Louis Arch. No charge to learn more about the national treasure these rivers represent.

If you are interested in attending one of these workshops or would like ore information please contact: Bryan Hopkins, Environmental Education Specialist, Missouri Department of Natural Resources. Call: (573)-751-2452 or 1-800-361-4827

[mailto: nrhopkb@mail.dnr.state.mo.us](mailto:nrhpkb@mail.dnr.state.mo.us) or

visit Living Lands and Waters Website at

<http://www.dnr.state.mo.us/oac/rivercleanup.htm>





Non-Profit Organization

U.S. Postage

**PAID**

Carbondale, IL

Permit 3

Shawnee Group  
P.O. Box 117  
Carbondale, IL 62903-0117  
USA, Earth, Milky Way

Since taking office, the Bush administration has gutted all of the following environmental rules except for one. Can you find the regulation W. missed?

1. Regulations minimizing raw sewage discharges and requiring public notice of overflows.
2. A rule prohibiting the federal government from awarding contracts to companies that violate federal laws, including environmental regulations.
3. Forest Service regulations giving watershed health, wildlife, and recreation higher priority than timber sales while carving out a larger role for scientists, and providing for more and earlier public input in developing forest plans.
4. National Park Service rules phasing out snowmobiles in Yellowstone and Grand Teton National Parks
5. A provision allowing the Secretary of the Interior to stop new mines from being created on federal land if they would result in "substantial irreparable harm" to people or the environment .
6. Requirements that mining companies protect waterways and clean up mine-related pollution.
7. A portion of the Endangered Species Act requiring the Fish and Wildlife Service to respond to private lawsuits seeking to add new species to the list.
8. Army Corps of Engineers regulations mandating the replacement of destroyed wetlands and banning the destruction of seasonal streams.
9. New National Park Service rules banning personal watercraft at eight national parks.
10. Army Corps regulations stating that rivers and streams may not be used for dumping industrial waste.
11. A 1989 federal law requiring states to test all children on Medicaid for lead poisoning.

See: <http://www.sierraclub.org/bush/safeguard.asp> for the answer.

## Shawnee Group Executive Committee

Chair	Laurel Toussaint		✉ <a href="mailto:laureltous@hotmail.com">mailto:laureltous@hotmail.com</a>
Vice-Chair	Donna Ayers	985-6917	✉ <a href="mailto:dayers@accessus.net">mailto:dayers@accessus.net</a>
Secretary	Cathie Hutcheson	529-2022	✉ <a href="mailto:hutche@siu.edu">mailto:hutche@siu.edu</a>
Treasurer	Bill Boman	995-9976	✉ <a href="mailto:billbo@onemain.com">mailto:billbo@onemain.com</a>
Conservation Chair	Barbara McKasson	529-4824	✉ <a href="mailto:babitaji@aol.com">mailto:babitaji@aol.com</a> (Ex-Officio)
Membership Chair	Ron Schmeck	529-8387	✉ <a href="mailto:rae50@siu.edu">mailto:rae50@siu.edu</a>
Outings Chair	Bob Tyson	684-5643	✉ <a href="mailto:robkay43@webtv.net">mailto:robkay43@webtv.net</a>

## Sierra Club Websites

National: <http://www.sierraclub.org> IL Chapter: <http://illinois.sierraclub.org> Shawnee: <http://illinois.sierraclub.org/shawnee/index.htm>

Subscribe to the Shawnee Trails Newsletter & Access Its Archives: <http://lists.sierraclub.org/archives/il-shawnee-trails.html>

Subscribe to the Shawnee Forum & Access Archives: <http://lists.sierraclub.org/archives/il-shawnee-forum.html>

National Sierra Club Listserv Portal (subscribe to other newsgroups): <http://mitchell.sierraclub.org/infosys/Listserv/ListHome.asp>

National Sierra Club Outings Catalog: <http://www.sierraclub.org/outings/national/>

Sierra Club Chapter Outings Catalog: <http://www.sierraclub.org/outings/chapter/>

Shawnee Group Outings Catalog: <http://illinois.sierraclub.org/shawnee/outings.htm>

Sierra Club Merchandise: <http://illinois.sierraclub.org/shawnee/fundraising.htm>

Newsletter Editor Bob Pauls 618-549-9408 ✉ <mailto:sg618@yahoo.com>