



**SIERRA
CLUB**
FOUNDED 1892

Shawnee Trails

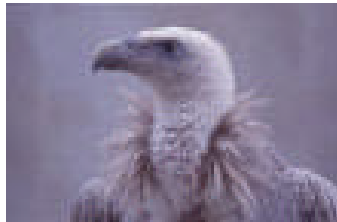
News of the Shawnee Group — November 2002

The Wildlife of China

Membership Meeting Program

In this Issue:

- Member Program: 1
John Schwegman
on China's Wildlife
- Outings Calendar; 2
Adventure Guide
- CCC Civilian 3
Conservation Corps
in the Shawnee
National Forest
- Deal on Fire — Insert
Logging bill; Forest A
Planning Process
Meetings
- Vote Smart Insert
B
- Volunteers , Back
Web Resources, &
Monthly Quote

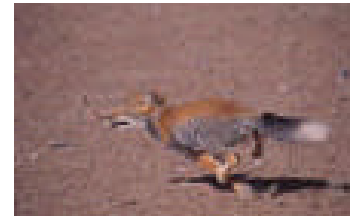


Join Shawnee Group members on November 14th at the Unitarian Fellowship building for the 7:30 PM presentation by John Schwegman on China's amazing diversity of wildlife. Join John and other Shawnee Group members in a pre-meeting dinner at Quatro's Pizza at 5:45 PM.

China is the third richest country in the world in terms of native species. Threatened by pollution, poaching and large-scale land reclamation projects, China's wildlife population is on the decline, with many species of animals nearing extinction. Despite efforts to protect endangered species, conservationists are warning that action needs to be taken to prevent further degradation.

China has more than 4,400 species of vertebrates — more than 10 percent of the world's total. There are nearly 500 mammalian species, 1,189 species of birds, more than 320 species of reptiles and 210 species of amphibians. Wildlife unique to China includes such well-known species as the giant panda, Chinese alligator, golden-haired monkey, South China tiger, brown-eared pheasant, white-flag dolphin, and red-crowned crane, totaling more than 100 species.

According to the World Wildlife Fund in China, at least 20 percent of all plant and animal species in the country are threatened, well over the world's average of 10 to 15 percent. At least 156 of the 640 species listed on the International Convention on the Trade of Endangered Species of Flora and Fauna are found in China. Nowhere is the threat more evident than in Shanghai, where urban expansion projects have forced hundreds of species of wild birds and reptiles from their natural environments.



In an effort to protect the nation's zoological and botanical resources, and save species close to extinction, China has established 932 nature reserves to protect forests and wildlife.

For additional insight into China's wildlife, don't miss John Schwegman's special presentation on November 14th at 7:30 PM.

Selected websites on the wildlife of China:

- AsianInfo: <http://www.asianinfo.org/asianinfo/china/pro-wildlife.htm>
- China Exploration and Research Society: <http://www.cers.org.hk/>
- US Fish and Wildlife Service: <http://international.fws.gov/facts/chinafact.html>

The public is welcome to attend this and all other Sierra Club meetings and outings.

Event Calendar

November 14 ~ Membership Meeting @ Unitarian Church, 7:30 PM

November 21 ~ EXCOM Meeting @ Clara McClure's at 5:30 PM

November 23 ~ Newsletter Content Deadline @ Noon

November 27 ~ Newsletter Folding @ Don Lawrence's at 5:30 PM

December ~ Election of new EXCOM members

Outings Calendar

(See outing updates at <http://illinois.sierraclub.org/shawnee/outings/outings.htm>)

SHAWNEE GROUP OUTINGS



November 16 ~ Signal Point Trail hike near Lake Glendale that was built in the 1930's. The 80 acre man-made lake is known for its excellent clarity. One mile south of the lake, along the Signal Point ridge is evidence of an old road – the stagecoach route between Golconda and Vienna. It is within the general location of the Illinois section of the Cherokee Indians' Trail of Tears, which ran through Illinois, Missouri, and into Oklahoma.

Please meet at the Murdale Shopping Center sign 8 AM for car pooling, or the Marion Wal-Mart parking lot (nearest Ryan's Restaurant) at 8:30. We will hike along the bottom of this high and long bluff line and hopefully, along the top of it. The route is rated easy to moderate.

Lake Glendale Visitor Map: http://illinois.sierraclub.org/shawnee/outings/l_glendale_map1.jpg

Call Bob Tyson at 684-5643 or e-mail: <mailto:robkay43@webtv.net>.

Adventures with Uncle Bob

See <http://illinois.sierraclub.org/shawnee/unclebob/adventures.htm>

Your Monthly Guide to Self-Adventure with Bob Tyson

This month we are exploring the LITTLE GRAND CANYON.

Directions: Taking 20th street south in Murphysboro, IL. After crossing the bridge the road becomes Town Creek Road (CR 5). Turn left onto Hickory Ridge Road 0.8 miles after the bridge. Follow this blacktop road about 6.2 miles where you will see Little Grand Canyon Road. Turn right and travel 1.4 miles. If the Shawnee National Forest sign is missing, a green road sign will say "little grand canyon lane". Follow it to the parking lot. If you are coming from Jonesboro, take IL Route 127 north to Etherton Road, turn left and travel 2.6 miles, turn left again and go 1.2 miles on Poplar Ridge Road, continue west on Hickory Ridge Road 2.3 miles, and finally turn right on Little Grand Canyon Road 1.4 miles to the parking lot.

There are two trailheads at the parking lot. I suggest taking the one by the restrooms. This is a 3.6 mile loop and is rugged for a short distance while ascending or descending the canyon. As you hike along this backbone trail, note the deep ravines on both sides of the trail. Eventually, you will encounter Chalk Bluff Overlook for a spectacular view over the area. Descend the canyon on the switchback trail. At the bottom, look for a faint trail on your left near the canyon wall to continue through the open brush and back into the woods. Now you will be able to look up at the canyon walls and rock formations. Soon you will encounter a confusing trail intersection -- go right. At some point you will note the scenic, rock staircase opening to ascend the canyon. Before doing so, go straight ahead and follow the dry creek bed to a large shelter bluff and on to a lovely narrow canyon/grotto. You can then ascend the canyon on a switchback trail to the top for yet another scenic view over the canyon. The trail ends at the parking lot. Picnic tables are available.

In the winter, taking the left trail as I suggested above, following a hard freeze preceded by rain, you will be rewarded with the sight of several 300 -- 400 foot frozen waterfalls as you descend the canyon. Two safety cautions are in order:

1. If there is a chance of heavy rain, don't even think of getting into this canyon because of flooding.
2. In the event of significant winter ice, the last section of trail before the bottom of the canyon is very risky!

Little Grand Canyon Trail map: http://illinois.sierraclub.org/shawnee/images/lgc/lgc_map.jpg

For additional information on this hike or other outing locations, call Bob Tyson at 684-5643.

The Civilian Conservation Corps in the Shawnee National Forest

Submitted by Bob Pauls



When the waves of migration washed over Illinois they left behind settlers that cleared the wooded areas in order to work many small, highly erodable farm plots. These plots eventually were abandoned or sold off to create the Shawnee National Forest. Most of the land was best suited for trees. The crops farmers chose to plant quickly depleted the natural fertility contained in the shallow forest soils.

The forest is indebted to the Civilian Conservation Corps (CCC), also known as Roosevelt's "Tree Army," for reclaiming for man and nature the Shawnee National Forest (SNF). In the Fall of 1933, when land to create the SNF was just beginning to be acquired, some of the Sixth Corps of the Civilian Conservation Corps was scheduled to spend the upcoming winter in southern Illinois. The Sixth Corps Area included 139 camps containing 27,000 men of which 33 camps were in Illinois. Sixteen companies of the Sixth Corps occupied eleven named CCC camps in the Shawnee National Forest: Camp Cadiz, Camp Herod, Camp Hicks, Camp Kedron, and Camp Simpson on the eastern side of the forest and Camps Glenn, Water Valley, Delta, Union, Hutchins, and Camp Pomona, an African-American CCC camp, on the west side.

The 165,347 CCC workers in Illinois were tasked with a wide range of projects: clearing and constructing forest trails, clearing and cleaning channels & levees, quarrying gravel, cutting stone, building roads and rustic recreation areas, constructing look-out towers, working as fire look-outs and ground crews, stringing telephone line, collecting nuts for tree seeding, and planting trees. Many of the forest improvements we see today such as at Giant City State Park, were constructed by the Illinois CCC companies. Nationwide, the CCC planted over three billion of trees; built 125,000 miles of truck trails, strung 89,000 miles of telephone lines, developed 800 new state parks, and helped control erosion on over 40,000,000 acres of farm land. The present and future value of the work completed was estimated as having a present and future value of \$2,000,000,000.

A CCC company typically consisted of about 200 people, with most of them coming from one city or county within a state. The CCC, Works Project Administration (WPA) and other depression-era work projects, such as the Emergency Conservation Work (ECW) Project (1933-37), were instrumental in revitalizing about 60,000 acres in Southern Illinois, improving the local economy and educating the area's workforce up until the beginning of WWII. Reforestation work began by the CCC continues today on such projects as Inahgeh, the Mississippi River floodplain wetland restoration project, Oakwood Bottoms and other locations.

Each CCC company published their conservation activities and other news in newspapers such as the *Austin Holler*, *Camp Hutchins Veteran*, *Camp Union Veteran*, *Daily Sphinx*, *Echo*, *Giant City Minni-graph*, *Pomonian*, *Pyramid*, *Riverside Ripple* and the *Stone City Weekly*. (Available from: The Center for Research Libraries; <http://www.crl.uchicago.edu/DBSearch/Ccc.asp>)



Additional CCC related websites:

- Records of the Civilian Conservation Corps, http://www.archives.gov/research_room/federal_records_guide/civilian_conservation_corps_rg035.html
- "Suitable Only For Tree Crops: The Story of the Shawnee National Forest", <http://www.fs.fed.us/r9/shawnee/heritage/historyoftheshawnee.htm>
- The New Deal Network, <http://newdeal.feri.org/forests/af733.htm>
- Civilian Conservation Corps Alumni, <http://www.cccalumni.org>

Affiliate Category of the Month: **Gourmet**

<http://illinois.sierraclub.org/shawnee/affiliates/gourmet.htm>

Please support the companies that support the Shawnee Group, such as:



Decisions 2002 – Voter Information

Vote for the Environment on November 5th

In the November election, the Sierra Club's Illinois Chapter Executive Committee (EXCOM) endorsed nine candidates for Illinois offices: Democrat Dick Durbin for re-election to the U.S. Senate, and two Republicans (Mark Kirk and Tim Johnson) and four Democrats for the House of Representatives (Challengers: Melissa Bean; incumbents Danny Davis, Lane Evans, Luis Gutierrez, Janice Schakowsky; and open seat candidate Rahm Emanuel). ([See: http://www.sierraclub.org/endorsements/](http://www.sierraclub.org/endorsements/))



The League of Conservation Voters (LCV) tracks the voting records of Illinois elected officials in the House and Senate. For voting details of elected officials used to de-

termine their 2001 conservation score shown below, please visit their website at: <http://capwiz.com/lcv/dbq/officials/>

Senate

Senator	State	2001 Score
Richard Durbin (DEM)	IL	100%
Peter Fitzgerald (REP)	IL	38%

House

Representative	District	2001 Score
Bobby Rush (DEM)	IL-1	57%
Jesse Jackson (DEM)	IL-2	100%
William Lipinski (DEM)	IL-3	36%
Luis Gutierrez (DEM)	IL-4	93%
Rod Blagojevich (DEM)	IL-5	93%
Henry Hyde (REP)	IL-6	14%
Danny Davis (DEM)	IL-7	93%
Philip Crane (REP)	IL-8	0%
Janice Schakowsky (DEM)	IL-9	100%
Mark Kirk (REP)	IL-10	71%
Jerry Weller (REP)	IL-11	29%
Jerry Costello (DEM)	IL-12	64%
Judy Biggert (REP)	IL-13	21%
J. Dennis Hastert (REP)	IL-14	NA
Timothy Johnson (REP)	IL-15	64%
Donald Manzullo (REP)	IL-16	7%
Lane Evans (DEM)	IL-17	86%
Ray LaHood (REP)	IL-18	50%
David Phelps (DEM)	IL-19	43%
John Shimkus (REP)	IL-20	0%
Average	---	54%

The LCV Action Fund offers endorsements to Republican, Democratic and Independent candidates who have demonstrated a commitment to preserving America's natural resources and ensuring a healthy environment for future generations.



To help voters find out how congresspersons voted on environmental issues, the Sierra Club's **Votewatch** tracks legislation that impacts America's air and water quality; our national forests, parks, and public lands; the habitat of our fish and wildlife; and the quality of our global and local environments. Go to <http://www.sierraclub.org/votewatch/>

Project Vote Smart (<http://www.vote-smart.org/index.phtml>) has attempted since 1992 to maintain the environmental voting records of over 41,000 political candidates in U.S. elections calculated using their National Political Awareness Test (NPAT) criteria.



All but one of the southern Illinois legislative candidates for the November election FAILED to return the 2002 NPAT test prior to this issue of the Shawnee Trails going to press. Richard Whitney, Green Party candidate in the 115th District race, did return his NPAT survey. According to Vote Smart, Whitney's Republican rival and incumbent representative, Mike Bost has "repeatedly refused requests by citizens in the Illinois, leaders of both major political parties, major news organizations (*including the Southern Illinoisan Newspaper*) and Project Vote Smart staff to provide voters with essential issue information in the 2002 National Political Awareness Test. This candidate would not provide this information to citizens in the candidate's own state – no matter who asked them." He did complete some of the year 2000 NPAT questions before his last election. In that NPAT survey, Bost tied with five other Republicans with the second WORST environmental protection voting record in Illinois. In 2000, Bost had only a 14% positive NPAT voting record for the environment. In 2002, Bost's environmental voting record improved to 18%.

To determine candidate positions on environmental issues, the Sierra Club's Illinois Chapter office sent election surveys twice to the offices of Representative Bost (REP) and Deering (DEM). Neither the Republican or Democratic party candidate for the Illinois House seat for the 115th District returned their survey despite two additional phone calls to acquire it from them. However, Green Party candidate in the 115th district, Richard Whitney, did return his survey which contains responses highly supportive of environmental protection policies supported by the Sierra Club. Whitney also agreed to be and was interviewed by the Shawnee Group on his environmental platform.

Based on Bost's voting record, Deering's non-response, and Whitney's platform on environmental protection, the Shawnee Group Excom of the Sierra Club has voted to endorse Richard Whitney for State Representative.

Whitney's Website can be seen at: <http://www.voterichwhitney.com/>

Vote Smart on November 5th

ALERT: DEAL ON FIRE — Logging bill threatens old growth in national forests

Five Minute Action — Please make the call!

Submitted by Barbara McKasson

"Big Timber" continues to use this year's tragic fire season as a way to increase commercial logging in our national forests by undoing environmental protections and undermining meaningful public involvement. Alarming legislation, H.R. 5319, sponsored by Representatives McClinnis and Walden is expected to come to the floor of the House soon after the U.S. Congress reconvenes on Nov. 12th – so YOUR help is needed!

A compromise on H.R. 5319 could be reached that could come up for a vote by the House of Representatives as early as November 12th. Talks between Reps. Scott McClinnis (R-CO), George Miller (D-CA), Sherwood Boehlert (R-NY) and Peter DeFazio (D-OR) have reportedly been continuing. As approved by the Resources Committee, H.R. 5319:

1. Severely undermines the National Environmental Policy Act (NEPA) by allowing for no alternatives to a fire logging project to be offered or analyzed.
2. Encourages logging by permitting timber companies to log large, healthy trees as "payment" for thinning and brush removal. Thinning should be done by US Forest Service personnel instead.
3. Substantially weakens public involvement by requiring unreasonable time limits on citizen appeals and judicial review that render the Endangered Species Act and Clean Water Act unenforceable.

WHAT YOU CAN DO:

Please call your U.S. Representative (Costello, Phelps, Johnson) now at 202/224-3121 and urge him/her to oppose H.R. 5319 and to support the community protection alternative to be offered by Representative Jay Inslee (D-WA). Let your Representative know how H.R. 5319 is damaging to the environment, environmental laws, and public involvement.

If you can make extra calls, contact these Representatives' offices and urges them to oppose H.R. 5319:

- Rep. Sherwood Boehlert (202) 225-8772, talk to Aide David Goldston
- Rep. George Miller (202) 225-2095
- Rep. Peter DeFazio (202) 225-6416

Shawnee National Forest Planning Process Meetings Announced

By Barb McKasson

The Shawnee National Forest has announced a series of public meetings to develop alternatives to the changes proposed by the Forest Service for its Land and Resources Management Plan. We encourage members go to the meetings to become more informed on the process and what is at stake. Anyone who wants to carpool from Carbondale to any of the meetings should call Barb McKasson at (618) 529-4824. Call Steve Hupe at the Shawnee Forest Office, (618) 253-7114, if you have questions about the Plan or need additional information.

- Tuesday, Nov. 12, 6–9 PM, Southeastern IL College, Harrisburg; *Introduction to the Alternatives Development Process*
- Monday, Nov. 18, 6–9 PM, Davis McCann Township Hall, Murphysboro; *Watershed Resources, Lands and Minerals*
- Thursday, November 21, 6–9 PM, Southeastern IL College, Harrisburg; *Recreation, Wilderness, Wild and Scenic Rivers*
- Monday November 25, 6–9 PM, Davis McCann Township Hall, Murphysboro; *Wildlife Habitat and Forest Health*
- Wednesday, January 22, 2003, 6–9 PM, Southeastern IL College, Harrisburg; *Identifying the Plan Revision Alternatives*



Shawnee Group
P.O. Box 117
Carbondale, IL 62903-0117
USA, Earth, Milky Way

Non-Profit Organization

U.S. Postage

PAID

Carbondale, IL

Permit 3

His was a dauntless soul... Not only are his books delightful, not only is he the author to whom all men turn when they think of the Sierras and Northern glaciers, and the giant trees of the California slope, but he was also – what few nature-lovers are – a man able to influence contemporary thought and action on the subjects to which he had devoted his life. He was a great factor in influencing the thought of California and the thought of the entire country so as to secure the preservation of those great natural phenomena – wonderful canyons, giant trees, slopes of flower-spangled hillsides – which make California a veritable Garden of the Lord ... Our generation owes much to John Muir.

~ [Theodore Roosevelt on John Muir](#)

Shawnee Group Executive Committee

Chair	Laurel Toussaint	964-1339	✉ mailto:laureltous@hotmail.com
Vice-Chair	Donna Ayers	985-6917	✉ mailto:dayers@accessus.net
Secretary	Cathie Hutcheson	529-2022	✉ mailto:hutche@siu.edu
Treasurer	Bill Boman	995-9976	✉ mailto:billbo@onemain.com
Conservation Chair	Barbara McKasson	529-4824	✉ mailto:babitaji@aol.com (Ex-Officio)
Membership Chair	Ron Schmeck	529-8387	✉ mailto:rae50@siu.edu
Outings Chair	Bob Tyson	684-5643	✉ mailto:robkay43@webtv.net

Action Committee Chairs

Conservation, Biodiversity, Endangered Species, Habitat and Wildlife	Barbara McKasson
Fundraising	Bill Boman
International Populations	Cathie Hutcheson
Land Management, Parks and Refuges	Stanley Harris
Marine	Don Lawrence
National Forests – End Commercial Logging	Ed Cook
Political Programs	Clara McClure Donna Ayers
Information Technology, Publications, and Newsletter Editor	Bob Pauls ✉ mailto:sg618@yahoo.com

Sierra Club Websites

National: <http://www.sierraclub.org>
Illinois Chapter: <http://illinois.sierraclub.org>
Shawnee Group: <http://illinois.sierraclub.org/shawnee/index.htm>

Subscribe to the Shawnee Trails Newsletter & Access Its Archives:
<http://lists.sierraclub.org/archives/il-shawnee-trails.html>

Subscribe to the Shawnee Forum & Access Archives:
<http://lists.sierraclub.org/archives/il-shawnee-forum.html>

National Sierra Club Listserv Portal (subscribe to other newsgroups):
<http://mitchell.sierraclub.org/infosys/Listserv/ListHome.asp>

National Sierra Club Outings Catalog:
<http://www.sierraclub.org/outings/national/>

Sierra Club Chapter Outings Catalog:
<http://www.sierraclub.org/outings/chapter/>

Shawnee Group Outings Catalog:
<http://illinois.sierraclub.org/shawnee/outings.htm>

Sierra Club Merchandise:
<http://illinois.sierraclub.org/shawnee/fundraising.htm>