



Shawnee Trails

News of the Shawnee Group — April 2002

Crab Orchard National Wildlife Refuge

In this Issue:

April Dinner and Meeting Program	1
Meetings Calendar	1
Outings Calendar	2
Outing with Uncle Bob	3
Who We Are: Member Laurel Toussaint	3
ALERT: Isolated Wetlands	Insert A
LaRue/Pine Hills Appreciation Day, Chapter EXCOM Meeting, & Free Member Bag Offer	Insert B
Volunteers and Web Resources	Back

Join Shawnee Group members on April 11th at the Unitarian Fellowship building for the 7:30 PM presentation by Johnathan Shaffler on the comprehensive plan for Crab Orchard National Wildlife Refuge. Members are also invited to come socialize and meet the speaker at the pre-meeting dinner from 5:45 to 7:15 PM at Big Boy's {Barbe} Q'n restaurant, 104 W. Jackson, Carbondale.

The Crab Orchard National Wildlife Refuge is located approximately five miles west of Marion, Illinois in Williamson County, IL. The Refuge consists of approximately 43,500 acres of multiple-use land. The land is used as a wildlife refuge, and also for recreational, agricultural and industrial purposes. 22,000 acres have been designated a wildlife sanctuary.

Prior to and during World War II, the Refuge was managed by the Department of Defense (DoD). The U.S. Army and several contractors leased portions of the Refuge from the DoD for the manufacture of bombs, land mines, and other explosives, as well as metals fabrication, plating, printing

inks, and electrical components. Several of these industries landfilled wastes generated during their manufacturing activities in parts of the refuge. The Crab Orchard National Wildlife Refuge was placed on the National Priorities List (NPL) in 1987.

The mandated objectives of this refuge include: wildlife management, agricultural development, recreational use and industrial operation. Habitat types include water, hardwoods, brush, pine plantation, grasslands. They all facilitate the principal wildlife management goal of providing feeding loafing areas for migrating and wintering waterfowl. An extensive public use program includes implementation of a fishery management plan which allows Crab Orchard Lake to be widely recognized as a place to fish for large mouth bass and channel catfish.



Did you know the Shawnee Group of the Sierra Club...

- Is one of fifteen Sierra Club Groups in Illinois.
- Has nearly 400 members.
- Has a website and member listserv forum. (See back page of newsletter)
- Sponsors family outings all year long.
- Was instrumental in passing the 1990 Illinois Wilderness Act.
- Needs volunteers!

Member Meetings and Projects

April 3rd — Springfield Lobby Day to protect Illinois' isolated wetlands. Attend lobbying training and visit with your state representatives about H.B. 6013, a bill to protect isolated Illinois wetlands. Call Jennifer Hensley at the Illinois Sierra Club Chapter Office at (312) 251-1680. Lunch will be provided to all volunteers who register.

April 11th — Membership Meeting at Unitarian Fellowship, 7:30 PM. Guest Speaker: Johnathan Shaffler on the Crab Orchard National Wildlife Refuge.

April 18th — Shawnee Group EXCOM meeting at Clara McClure's, 5:30 PM.

April 20th — May Newsletter content submission deadline.

April 21st — Illinois Wilderness Action Network (IWAN) coordination meeting.

April 25th — May newsletter folding at Don Lawrence's.

May 11th-12th — Illinois Chapter EXCOM gathering in Carbondale. (see inside)

May 16th — Shawnee Group Membership Meeting at Unitarian Fellowship, 7:30 PM. Program: TBD

Outings Calendar

(See outing updates at <http://illinois.sierraclub.org/shawnee/outings.htm>)

Please RSVP all outings to leaders!

April 6th – Heron Pond hike with Southern Illinois Audubon Society. Meet at 10 AM and trailhead in Johnson County. Hike led by Carl Schwegman.

April 10 - 14th – Join the Sierra Club's Valley of the FOX Group in backpacking in the Garden of the Gods, Shawnee National Forest. 22 miles of hiking in three days. Camp Wednesday night in Garden of the Gods Recreation Area. Spend the next three days hiking through the Garden of the Gods and Lusk Creek Wilderness Area. Enjoy the flowering dogwood, spring flowers and migratory songbirds. Free time each day for personal pursuits. Two-mile hike-out on Sunday. Experienced backpackers only. Cost \$40.00. Limit 10. Leaders Jim Hohenberger and Terri Treacy, <mailto:terrtreacy@yahoo.com>

April 19 - 21st – Wilderness Day Hikes and Camping for advanced beginners. Hike 6-7 miles of proposed Burke Branch wilderness in the vicinity of Burke Creek. On Sunday, hike Jackson Hollow known for its dramatic bluffs and spring wildflowers. Local naturalists will accompany. Semi-primitive camping in a private, 500 acre wildlife sanctuary adjacent to the Shawnee National Forest. Reservation and payment of \$40 covers food (Friday dinner through Sunday lunch) and camping donation. Call Terri Treacy at (618) 521-1030 or e-mail to <mailto:terrtreacy@yahoo.com>

April 12- 13th – LaRue-Pine Hills Appreciation Days. Naturalists will be available to lead hikes to the woods and bluffs. Visit literature tables.

April 20th – Earth Day Fair at Carbondale's Evergreen Park in conjunction with Carbondale Clean-up Day.

April 22nd – **Earth Day Anniversary - #31**

April 23rd – Alternative Transportation Day at Carbondale's Interfaith Center:

- ▶ Table display on proposed Jackson County Greenways and Trails Plan.
- ▶ Free Bicycle Repair from 11 – 4 PM.
- ▶ Hybrid electric car owner Round Table and Viewing at 5 PM.
- ▶ Critical Mass Bicycle Rally at 6 PM.

May 11th – Hike with the Illinois Sierra Club Executive Committee at Rocky Bluff. Call leader Terri Treacy at 618-521-1030 or <mailto:terrtreacy@yahoo.com>

May 12th – Hike with the Illinois Sierra Club Executive Committee to Hutchins Creek Wilderness Complex. Enjoy scenic views, Spring wildflowers, migrating songbirds with local naturalists guides. Call Terri Treacy 618-521-1030 or <mailto:terrtreacy@yahoo.com>

May 23 - 26th – Mini-Broadway for the Great Old Broads for Wilderness. See: <http://www.greatoldbroads.org>

SERVICE OUTINGS

May 18th – Lusk Creek Trail maintenance.* Meet on Co. Rd. 100 across from the Circle B Campground or carpool at Murdale Shopping Center sign at 8 AM & at 8:30 Marion Wal-Mart (by Ryan's) Call Bob Tyson: 684-5643 or Ranger Peterin at 687-1731.

June 29th – Ripple Hollow Trail maintenance. Meet on Forest Route (FR) 664, west of Millcreek, IL at the junction of FR 235 or carpool at Murdale Shopping Center sign at 8 AM & at Murphysboro ranger station at 8:20. Call 833-8576 or 684-5643.*

July 27th – Dutchman Lake section of River-to-River Trail maintenance.* Meet on FR 400 and Dutchman Lake Road. Call Bob Tyson: 684-5643.

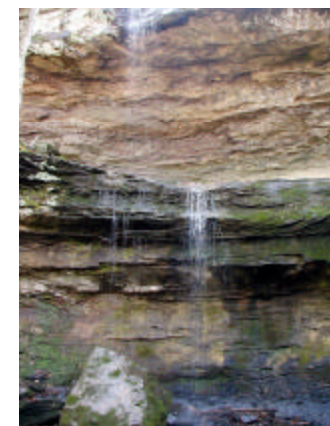
August 31st – Panthers Den section of River-to-River Trail maintenance.* Meet at junction of FR 725 and CR 45 or carpool from Murdale Shopping Center sign at 8 AM. Call Bob Tyson: 684-5643.

September 28th – Cedar Lake section of River-to-River Trail maintenance.* Meet at junction of FR 360 and CR 17 or carpool at Murdale Shopping Center sign at 8 AM & at Murphysboro Forest Service ranger station 8:20. Call Bob Tyson: 684-5643.

* All trail work starts at 9 AM and ends at 3 PM. Bring lunch, water, gloves, backpack, and appropriate clothing. Tools provided with advance notice.

Get Outside!

Discover Southern Illinois
Photos by Ed Cook



10th Annual LaRue/Pine Hills Appreciation Day

Public Schedule

Note: Meet at the nearby Trail of Tears State Park unless indicated otherwise

April 12, Friday

6:00-9:30 PM — Teen Conservation and Heritage

Program at Lincoln Memorial Park, Jonesboro, IL.

7:00-10:00 — Choice of One: Mussels of Illinois Slide Show in office, History of the Depression-Era, CCC Camps in the Pine Hills, Night Bird Sounds, Frog and Toad Calls, Bats (mist netting of bats).

April 13th, Saturday

7:00-10:00 — Birds.

8:00-10:00 — Birds, Wildflowers, Live mammal Trapping

9:00-9:45 — Just For Kids (age 3-6 accompanied by adult)

9:30-Noon — Canoe LaRue

10:00-12:00 — Birds, Wildflowers, Natural Communities of the LaRue Pine Hills, Reptiles and Amphibians, Stream Habitat, Shawnee Nature Photography, Soils, and Swamp Fishes.

10:00-12:00 — Natural History of LaRue Swamp, Tree, Cultural History of the LaRue Pine Hill, Edible and Medicinal Plants, Mushrooms.

12:00-12:30 — Bring a lunch; drinks provided.

12:30-1:00 — Appreciation Ceremony, Biodiversity of LaRue Pine Hills and the Illinois Nature Preserves System.

1:00-3:00 — Birds of Prey Demonstration, Reptiles and Amphibians, Stream Habitat Walk, Insects, Natural History Survey, Nature Photography, Soils, Tree Identification, Geology of the Illinois Ozarks, Edible and Medicinal Plants.

Shawnee Group To Host Illinois Chapter Meeting: May 11th & 12th at Touch of Nature

All Shawnee Group members are invited to participate in outings and a Saturday night party being held in conjunction with the Illinois Chapter EXCOM meeting that will be held at the Touch of Nature Environmental Center. The EXCOM members will hike the Rocky Bluff Nature Trail in the Crab Orchard Refuge Saturday morning. On Sunday, they will hike until 3 PM in the proposed Camp Hutchins Wilderness Area. Everyone is invited to fully participate in both hikes.

After the Saturday hike, the Chapter EXCOM will hold their business meeting from 1-7 PM at the Morris Lodge at Touch of Nature. This will be followed by a potluck dinner and party at Bill Boman's house starting at 7:30 PM. We especially encourage members to come to the business meeting, potluck dinner, and party. These are great opportunities to observe the Illinois Chapter EXCOM in action, learn more about the exciting campaigns and activities at the state level, and to meet the people who are making the decisions for our Chapter. Local host volunteers for the weekend are needed. To volunteer or receive additional event details, call our Chapter Delegate, Barb McKasson at (618) 529-4824.



\$15 Sierra Club Membership Special + Free Expedition Bag — Limited time Offer

April is the perfect month to buy or give a Sierra Club membership for a special price of only \$15. Not only will you be helping to preserve and protect America's environment, but each subscriber will also receive a free Sierra Club expedition bag (available during the month of April only), a year's subscription to Sierra magazine, and the Shawnee Trails newsletter. This is an offer than cannot be beat!

To take advantage of this special offer, you **must** use the link on the Shawnee Group homepage at <http://illinois.sierraclub.org/shawnee/index.htm>

Get the Shawnee Trails Delivered via E-mail

Every color-filled issue of Shawnee Trails is available up to a week in advance of the paper version. To receive it in your e-mail simply go to <http://lists.sierraclub.org/archives/il-shawnee-trails.html>. Go to the URL, select "subscribe", enter your name, address and membership number found on both your membership card and the newsletter mailing label and you'll soon be receiving the Shawnee Trails electronic newsletter.

ALERT: SAVING ILLINOIS NATURAL AREAS FROM HORSE TRAIL DAMAGE

The Battle Moves to the Political Arena

Sincere thanks go out to all of you who submitted comments in opposing allowance of horse trails in the Natural Areas of the Shawnee Forest. Unfortunately, horse camp owners and their supporters have also launched a letter writing campaign to enlist the help of state and national representatives. They are putting pressure on the Forest Service to literally give them "free rein" to ride in the 5% of Shawnee Forest that is now closed to horse traffic – the Natural Areas!

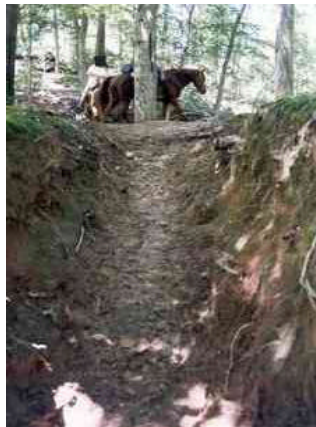
In response to this pressure, we suspect that horses may indeed be allowed into the Natural Areas of the Shawnee National Forest. The pressure by horse trail advocates has been relentless and well organized, and we have reason to fear that their campaign may well succeed.

We must remind our government officials that many people really **do** want the highest protection for the 0.07% of Illinois that remains in our high quality Natural Areas (NAs): We **do not** want to see the NAs frittered away for the benefit of a few. The eighty Natural Areas in the Shawnee Forest are a valuable part of our small remaining Illinois natural heritage. We want people to experience natural areas. It is not unreasonable for horse riders to stop at the boundary of the natural areas where they can tie up horses and then enjoy the Natural Areas on foot like the rest of us. Horse riders can already ride anywhere in the other 95% of the Shawnee National Forest, including many areas that are just as scenic as the Natural Areas.

What You Can Do:

Please send a short letter to your state and federal representatives, Governor Ryan, and IDNR Director Brent Manning. Let them know you oppose the Forest Service proposal to designate and build horse trails in more Natural Areas in the Shawnee Forest.

If you did send in comments to the Forest Service on the Natural Areas Trails Draft Environmental Impact Statement (DEIS), you can include that with a short cover letter.



Horse trail damage at a creek

What is a Natural Area?

A Natural Area is land in public or private ownership which, in the opinion of the Illinois Nature Preserves Commission, either retains or has recovered to a substantial degree its original natural or primeval character, though it need not be completely undisturbed, or has floral, faunal, ecological, geological or archaeological features of scientific, educational, scenic or esthetic interest.

Please ask for a written response, as this will put the politicians' comments on the record. Just a short note to each one from you will help tremendously!

Send a Message Today !

- ◆ Governor George Ryan
1107 W. DeYoung, Suite 10, Marion, IL 62959
✉ mailto:governor@state.il.us
- ◆ Director Brent Manning
Illinois Department of Natural Resources;
524 S. Second Street, Springfield, IL 62701
☎ Call: 217/785-0075
- ◆ U.S. Senator Richard Durbin
701 N. Court St., Marion, IL, 62959
✉ mailto:dick@durbin.senate.gov
- ◆ U.S. Senator Peter Fitzgerald
Ginger Creek Village #7 B; Glen Carbon, IL, 62034
✉ mailto:senator_fitzgerald@fitzgerald.senate.gov
- ◆ U.S. Congressman David Phelps
901 State Street; Eldorado, IL 62930
✉ mailto:david.phelps@mail.house.gov
- ◆ U.S. Congressman Jerry Costello
327 W. Main St., Belleville, IL 62220
✉ mailto:web.costello@mail.house.gov
- ◆ Supervisor's Office; Shawnee National Forest; 50 Hwy. 145 South, Harrisburg, IL 62946
✉ mailto:sstarkey@fs.fed.us

Thank you for your continued help and support!

~ Barb McKasson, Shawnee Group Conservation Chair

Outings with Uncle Bob

Your Monthly Guide to Self-Adventure

Get Outside!

Ferne Clyffe State Park is a 2,430-acre park located on Illinois Route 37, just one mile south of Goreville and 12 miles south of Marion, and is easily accessible from both I-57 and I-24. Get outside and discover a four mile loop trail within the park on the **River-To-River Trail**.

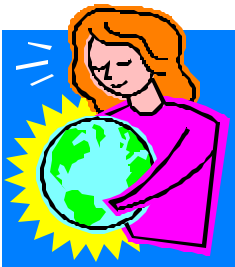
Directions: At the first intersection within the park, drive left towards Round Bluff Nature Preserve. By-pass the preserve and head on uphill. At the top, go right, then left at the next cross-roads. Park at the far end of this picnic area. Walking now, descend a steep gravel trail. At the bottom, go left. You will now be hiking along a creek bed with tall bluffs on your right for a couple miles. The trail then turns to the North. You will make a steep ascent for 200 ft. to the upper bluffs, where you will turn right at the T-junction on the trail. While hiking along the picturesque bluffs and rock formations with vista views, you will encounter a rock shelter, an impressive natural bridge, and long cascades of water. Pass the next trail intersection as you descend. At the next intersection of three trails, take a sharp right and follow the trail which will proceed back uphill to return you to the parking lot from where the loop trail began.

In a previous issue, a hike at Jackson Hollow was described. I want to call your attention to an impressive bluff shelter at **Jackson Hollow** I recently found which is near the horse camp on Trigg Tower Road. Find it by going north past that camp and park on the road just past the next cabin. Walk across the stone glade and start to descend a trail. Look to your left. The shelter bluff is under the road and appears to be a couple hundred feet in length and at least twenty feet deep.

"If people in general could be got into the woods, even for once, to hear the trees speak for themselves, all difficulties in the way of forest preservation would vanish."

— John Muir

Who We Are



Laurel Toussaint

Members of the Shawnee Group

The Sierra Club has become the most effective environmental organization in the world because of the leadership and involvement of local activists. One of many citizen pioneers in environmental protection in Illinois is Laurel Toussaint.

Laurel became a Lifetime member of the Sierra Club in 1985. That simple act forever changed the Shawnee Group of the Sierra Club. She participated in and led many outings. Her professional leadership helped bring about a greater awareness of the need to become more politically active and use grass-roots membership support to protect the environment of Southern Illinois. During the 90's she served as Conservation Chair, Vice-Chair and Chair. She became Chair again in 2001.

Laurel says she initially got involved with the Sierra Club because she wanted to do something that took her mind off her very stressful healthcare job. Little did she know then that she would use her leadership skills to lead many high stress efforts:

- ◆ Laurel helped organize the local 1990 Earth Day.

- ◆ Laurel is widely recognized as being significantly responsible for the successful campaign that led to passage of the 1990 Illinois Wilderness Act that designated seven areas in Southern Illinois for wilderness protection.
- ◆ Laurel served on the Illinois Chapter EXCOM. Laurel and her activist husband, Tom Bik, have led the campaign to protect Sugar Creek in Williamson County from being destroyed by a stream impoundment project sought by the City of Marion.
- ◆ For more than a decade, Laurel's globally important efforts have been directed toward protecting people and environment of the Alaska National Wildlife Refuge. <http://www.sierraclub.org/wildlands/arctic/peril.asp> She has lobbied hard to prevent destructive exploration and drilling for oil in that precious land. Her concern has extended to the Gwich'in Native Americans and their endangered culture. (Read about the Gwich'in at <http://www.sierraclub.org/sierra/200201/profile.asp>

Laurel knows success takes time and commitment. She continues to be an inspiration to all and she knows that an individual can make a real difference.

If you ever meet Laurel, she'll probably give you a hug and a big welcome. Then, she'll try to sell you an official Sierra Club calendar or date book.

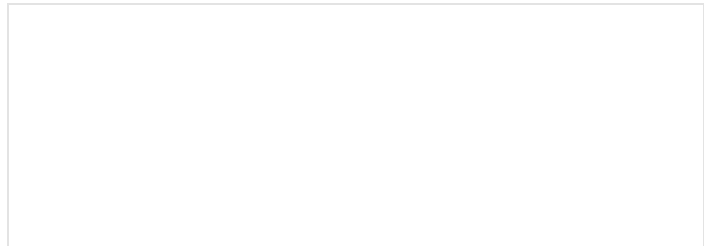


Non-Profit Organization
 U.S. Postage
PAID
 Carbondale, IL
 Permit 3

Shawnee Group
P.O. Box 117
Carbondale, IL 62903-0117
Earth

“Not to escape from but to escape to: not to forget but to remember. We've been taking care of ourselves in places where it really matters. The next step is to take care of the places that really matter.”

— *On The Loose, 1967*



Shawnee Group Executive Committee

Chair	Laurel Toussaint	964-1339	✉	mailto:laurel_tous@altavista.com
Vice-Chair	Donna Ayers	985-6917	✉	mailto:dayers@accessus.net
Secretary	Cathie Hutcheson	529-2022	✉	mailto:hutche@siu.edu
Treasurer	Bill Boman	995-9976	✉	mailto:billbo@onemain.com
Membership Chair	Ron Schmeck	529-8387	✉	mailto:rae50@siu.edu
Outings Chair	Bob Tyson	684-5643	✉	mailto:robkay43@webtv.com
Chapter Delegate	Barbara McKasson	529-4824	✉	mailto:babitaji@aol.com (Ex-Official)

Committee Chairs

Biodiversity	Barbara McKasson
Conservation	Barbara McKasson
Endangered Species/Wildlife	Cathie Hutcheson
Environmental Education	Ed Cook
Fundraising	Bill Boman
Habitat	Cathie Hutcheson
International Populations	Cathie Hutcheson
Lands Management	Stanley Harris
Marine	Don Lawrence
National Forests / ECL	Ed Cook
Parks and Refuges	Ed Cook
Phone Tree Coordinator	Barbara McKasson
Political	Clara McClure
Programs	Laurel Toussaint
Publications	Donna Ayers
Waste/Recycling	Clara McClure
Webmaster, Listserv & Mail List Manager, and Newsletter Editor	Bob Pauls ✉ mailto:sg618@yahoo.com

Sierra Club Websites

National:	http://www.sierraclub.org
Illinois Chapter:	http://illinois.sierraclub.org
Shawnee Group:	http://illinois.sierraclub.org/shawnee/index.htm
Subscribe to the Shawnee Trails Newsletter & Access Archives:	http://lists.sierraclub.org/archives/il-shawnee-trails.html
Subscribe to the Shawnee Forum & Access Archives:	http://lists.sierraclub.org/archives/il-shawnee-forum.html
National Sierra Club Listserv Portal:	http://mitchell.sierraclub.org/infosys/Listserv/ListHome.asp
National Sierra Club Outings Catalog:	http://www.sierraclub.org/outings/national/
Sierra Club Chapter Outings Catalog:	http://www.sierraclub.org/outings/chapter/
Shawnee Group Outings Catalog:	http://illinois.sierraclub.org/shawnee/outings.htm
Sierra Club Merchandise:	http://illinois.sierraclub.org/shawnee/fundraising.htm