

SHAWNEE TRAILS

Shawnee Group, Sierra Club February 2000

General Meeting

Shawnee Group, Sierra Club February 2000

The February General Meeting of the Shawnee Group will take place at the Unitarian Fellowship building, at 7:30 PM, on February 10, 2000.

The Unitarian Fellowship is located at the corner of University Avenue and Elm Street, in Carbondale, Illinois.

This month's program "**Extinction of Hawaiian Birds--A Continuing Process**" will be presented by, **Dr. George Waring**.

Hope to see you there!

Dinner Before Meeting

Join some of the Executive Committee, the speaker for the evening's program, and other members for dinner at **Quatro's Pizza**, 218 W. Freeman, at **5:45 p.m.** on **February 10**, before the meeting.

"Wild Beasts and birds are by right not the property merely of the people that are alive today, but the property of unknown generations, whose belongings we have no right to squander"

...Theodore Roosevelt

Correction(Attendance at the 9 Dec **Shawnee Forest** meeting was incorrectly reported in the last issue)--Ed Cook, Jim Bensman and Barb McKasson went to this meeting.

Shawnee Wilderness Slideshow Available for Your Group!!

by Barbara McKasson

An armchair tour of the Shawnee wilderness areas, including the beautiful scenery, rare plants, geology and native animals found in the Shawnee wilderness will be available to any group looking for a program starting in March. The program is suitable for adults and for school or scout groups. The slide show will emphasize three areas of proposed wilderness. We are willing to travel anywhere in Illinois or to surrounding states in the Southern Illinois region to present the program. The program can be adapted from 30 minutes to one hour, depending on your group's needs. Please help us reach out to other groups to educate others on this rare opportunity to add to the Illinois wilderness, and to help others appreciate what can be found in the Illinois wilderness, here in the Shawnee. We can also schedule a hike in the Shawnee wilderness for your group.

What does wilderness designation mean? It means that the wilderness area is protected from logging, motorized vehicles, road building, and in some cases mining and drilling. Wilderness areas remain open to hiking, hunting, fishing, and horseback riding. We are hoping to add Burke Branch, Ripple Hollow, and Camp Hutchins to the Shawnee wilderness system. These areas were left out of the 1990 Illinois Wilderness bill because of some mineral deposits, and politics. We would like to see these areas protected from ATV use, logging and mining. Please help us by asking any group to which you belong to schedule our Shawnee Wilderness program. Please contact Barb McKasson (618) 529-4824 or Ed Cook (618) 995-9309 to schedule the program. Thank you!

New Officers Installed!

Four positions on the ExCom have been filled as the result of the December election. Laurel Toussaint is Vice Chair, Cathie Hutcheson continues as Secretary, Sandy Anderson continues as Outings Chair and Sabrina Hardenbergh will serve as our new Treasurer, Judy Lewis was elected as the new Chair of the ExCom. Our thanks and appreciation for jobs well done go to Mary Campbell and Mary Swindell.

New Hiking Group Formed

The Jackson County Hiking Club has recently been formed. Hikes are planned three months in advance and will involve hiking with other Southern Illinois Clubs as well. The club meets on a quarterly basis at the Mississippi Flyway. It was agreed by members that a designated person will be in charge of each hike. His or her responsibilities would be to scout out the trail, make decisions about shuttles, weather, etc., be the contact person for information, notify the media, find a substitute leader if they can't make the hike and pass around a sign up sheet at each hike to list a contact person in case of an emergency,

In addition it was agreed that a copy of the minutes detailing the hikes will be sent out quarterly with the dates, times, contact person and phone number for each of the three scheduled hikes plus the Union County Hikes, the River to River hikes, and the Sierra Club hikes. If a person wants to receive the mailings, a fixed amount will be set for the year to be considered dues or just a donation to defray costs of mailings. After this first mailing, the people donating the money at the April meeting will receive the quarterly mailings. Contact Sandy Anderson 893-4545, Judy Lewis 529-5275, or Barb Eicholz 457-4369 if you have any question about becoming a member and for more information.

A list of the remaining hikes for this quarter follows: February 5, Saturday – Pickle Creek, Farmington MO; February 19, Saturday – Cedar Bluff to Goreville; February 26, Saturday – Garden of the Gods; March 4, Saturday, Gorham to Grand Tower; March 11, Saturday - Ripple Hollow; March 19, Sunday, Refuge; March 25, Saturday – Jackson Hollow; April 1, Saturday – Golconda; April 22, Saturday – Bald Knob; May 20, Saturday – Burden Falls; June 3, Saturday – Alto Pass, Tentative.

Cache River Wetlands Calendar of Events 2000

Wetlands of the Cache River are among only 15 sites in the U. S. recognized as 'Wetlands of International Importance'.

If you are looking for other nature activities the Friends of the Cache River Watershed has published a calendar for a variety of interpretative programs and special events within the Cache River Wetlands. Activities are held on weekends and are provided at no charge. There are even opportunities to become involved in hands-on environmental work, see Stewardship Saturdays below. A summary of these events listed in *Cache Connections* follows:

Waterfowl Watch at Bellrose Reserve--February 17, Thursday, 9 - 11 am. Call Cypress Creek National Wildlife Refuge at 634-2231 to make reservations which are required for this activity.

Stewardship Saturdays --Feb. 26, March 25, April 22, May 27, June 24, July 29, August 26, September 30, 9 am -12 noon. Volunteer work days are scheduled for one Saturday each month. Projects involve trail maintenance, tree planting, restoration work and clean-up projects. Call the Refuge for information on specific projects.

Frogs, Turtles, Lizards, and Snakes - Oh My! --April 29, 2000 Saturday 10 am--12 noon, meet at Main Building Entrance of Shawnee Community College. The program will include live exhibits (depending on availability, I presume) of salamanders, frogs, turtles, lizards and snakes.

Van Tours of Tunnel Hill Trail --April and October 2000. A series of van tours will be offered throughout the day on 10 miles of completed trail from Vienna to Tunnel Hill. Call Tunnel Hill State Trail Office at 658-2168 for specific dates and a tour schedule. Reservations Required. Meet at the Tunnel Hill State Trail Visitor Center.

From Proturans to Pelecinids: Insects Along the Trail --July 15, Saturday 1 pm - 4 pm. This venture is led by Dr. Michael Jeffords and Susan Post of the Illinois Natural History Survey. Along the trail we'll look for tiger beetles, listen for small pygmy grasshoppers, search for burrows of ground nesting bumblebees and wasps, and note the colorful flight of butterflies. Meet at Cache River State Natural Area office.

Blacklighting for Bugs --July 15, Sat. 9 pm - 11 pm, meet at Mermet Lake Fish & Wildlife Area Office

Swamp Night Hike --Aug 18, 7 pm-9 pm. Peeps, baaahs, croaks, grunts. Meet at the Lower Cache River Access.

Storytelling -- August 25, Friday, 7pm-9pm. Bring the family for an evening of story-telling and popcorn. Join storytellers, Tony Gerard and Beckie Mooneyhan as they tell tales of days gone by and the way people survived in the early days. Meet at Cache River State Natural Area office.

Continued on Page 3

Migration Celebration --May 13, Sat. 9am-11:30. (20max. Call 634-2231 for reservations) Meet at Cypress Creek Nat. Wildlife Ref. Office. Slide presentation on Illinois songbirds. Hike with Ornithologist Jeff Hoover in a bottomland forest as he demos field techniques to find and ID. songbirds. Dress appropriately. Bring Mos.Rpellnt.

Canoe Tours on the Cache --June 3, Sat. 9am-4pm. Tour ancient bald cypress and tupelo swamps. Call Cypress Creek National Wildlife Refuge at 634-2231 for reservations. Meet at the Lower Cache River Access.

Warbler Walk --June 17, Sat. 9am-11am. Join Jeff Hoover for a morning hike to look, listen and learn about warblers and other birds in forest along Cache, bring binos & field guide. Cache River State Nat. Area Office.

Who Gives a Hoot? --Sep. 16, Sat. 7pm-9pm. Owls of the Cache River Valley. Join us for an evening walk on the Section 8 Boardwalk to calls and learn about diff species in our area. Meet at sec 8 parking lot off Hwy. 37.

National Wildlife Refuge Week - Bike, Hike, and Canoe the Cache --Oct. 7-9. This 3-day event includes bicycling, canoeing, and hiking within forests and ancient swamps of IL Bayou. Call 634-2231 for a schedule.

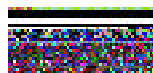
Cache River Wetlands Acorn Pick-up --Oct/Nov 2000 Call Nat. Conservtn Office 618-634-2524 for dates, etc.

Christmas Bird Count -- Call Cypress Creek Nat. Wildlife Refuge 618-634-2231 for info. Meet their office.

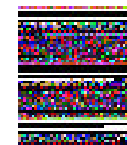
Earth Week



The **Southern Sustainability** group is making plans for Earth Week. Turley Park is reserved for **Earth Day**, Saturday, April 22. Events are shaping up including a performance by Carter & Connelley, bike tour, etc. The bike tour being organized by Jeff Maring will have options for courses of 15, 30, or 62 miles. To date, 120 primary and secondary school students are signed up to attend activities on campus. The Jackson County Recycling (Health Department) will be supporting Earth Week trash programs. In addition there are plans to plant 2000 trees in the area by Earth Day (2000 TREES PROJECT).



SHAWNEE OUTINGS



Hike to Hutchins Creek (white pine trail) from PineHills, on Sat., February 12. Meet under the Murdale Sign at Murdale Shopping Center, 9 am, Saturday, February 12. Call Sandy Anderson at 618-893-4545 for more information.

NEWSLETTER DEADLINE & FOLDING

Every month we get together to fold the newsletter for the newsletter mailing. We **welcome all the help we can get**. The deadline for the March newsletter will be February 20 with folding on February 24 at Don Lawrence's house at 5:30 pm. To check on directions call Don at 457-8989.

EXCOM MEETING

Our February meeting will be held on February 17, 5:30pm, McClure's house. All members are welcome to attend. For directions call Clara at 457-2025.

WOULD YOU LIKE TO SAVE PAPER AND RECEIVE THE NEWSLETTER BY E-MAIL?

Simply send a signed letter by regular mail or an e-mail message to <<donaldlaw@aol.com>> indicating that you would like to receive it by e-mail and I will put you on the e-mail list and take you off the regular mail list. Please give your name and regular PO address in your request.



Shawnee Group
 SIERRA CLUB
 P.O. Box 117, Carbondale, IL 62903-0117
Earth

Address Correction Requested

Non-Profit Organization

U.S. Postage

Paid

Carbondale, IL
 Permit 3

EXECUTIVE COMMITTEE

Chair—Judy Lewis, 529-5275, jude@siu.edu

Vice-Chair, Publications Chair, Laurel Toussaint, 964-1339, laurel.toussaint@sierraclub.org

Secretary, Wetlands, clean water, population, endangered species/habitats—Cathie Hutcheson, 529-2022, hutche@siu.edu

Treasurer—Sabrina Hardenbergh, 549-2608, sabrina@midwest.net

Membership Chair, Delegate to Chapter—Mary Campbell, 997-5736, mspurple1999@yahoo.com

Conservation Chair, Phone Tree Coordinator, Delegate to Chapter, Biodiversity—Barbara McKasson, 529-4824, babitaji@aol.com

Lands Management, Population/Growth, Endangered Species/Habitat Chair—Stanley Harris, 457-7078, biggrockk@aol.com

Wilderness/Parks/Refuges Chair, Shawnee Forest Chair—Ed Cook, 995-9309, galed@midwest.net

Grls Coordinator—John Kirkpatrick, 893-4663

Political Chair—Clara McClure, 457-2025

Outing Chair, Greeter—Sandy Anderson, 893-4545

Shawnee Trails Newsletter Editor, Computer Committee, Marine Chair—Don Lawrence, 457-8989, donaldlaw@aol.com

Yes, I want to join! I want to help safeguard our precious natural heritage. My payment is enclosed.

My Name _____

Address _____

City/State _____ ZIP _____

Check enclosed Phone (Optional) () _____

Please charge my Mastercard Visa E-Mail (Optional) _____

Cardholder Name _____

Card Number _____ Expiration Date ____/____

Contributions, gifts or dues to the Sierra Club are not tax deductible; they support our effective, citizen-based advocacy and lobbying efforts. Your dues include \$7.50 for a subscription to *Sierra* magazine and \$1.00 for your Chapter newsletter.

MEMBERSHIP CATEGORIES		
	INDIVIDUAL	JOINT
INTRODUCTORY	<input type="checkbox"/> \$25	
REGULAR	<input type="checkbox"/> \$35	<input type="checkbox"/> \$43
SUPPORTING	<input type="checkbox"/> \$50	<input type="checkbox"/> \$58
CONTRIBUTING	<input type="checkbox"/> \$100	<input type="checkbox"/> \$108
LIFE	<input type="checkbox"/> \$1000	<input type="checkbox"/> \$1250
SENIOR	<input type="checkbox"/> \$15	<input type="checkbox"/> \$23
STUDENT	<input type="checkbox"/> \$15	<input type="checkbox"/> \$23
LIMITED INCOME	<input type="checkbox"/> \$15	<input type="checkbox"/> \$23



P.O. Box 52968
 Boulder, CO
 80322-2968

F97QW1 **349**
 F97QW1G

PROTECT AMERICA'S ENVIRONMENT.
For our Families... For our Future.